

Storyboard:

0:00-0:15

B-Roll

0:16-0:31

Theatre scene, at night



0:32-0:41

Isolated eye shot “And your hazel eyes that make me wanna fucking cry.”



0:41-1:06

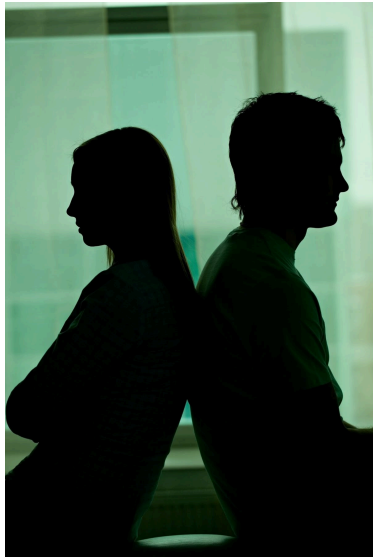
Indoor, B-Roll

Showcase distance for “but a stranger when we’re in the daylight” line.



1:06-1:18

Couple fighting, low shutter speed



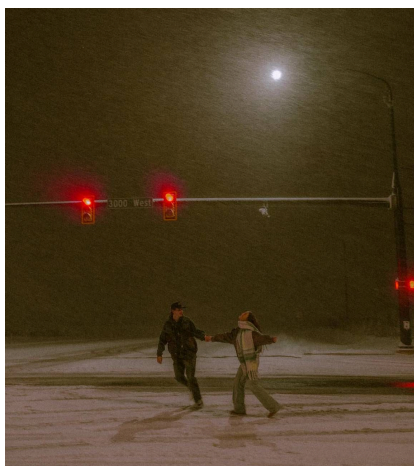
1:19-1:42

Dock scene, sunset



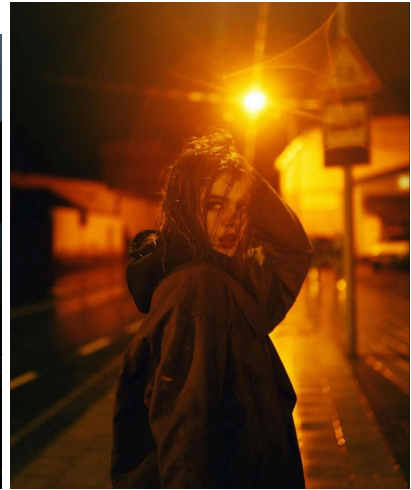
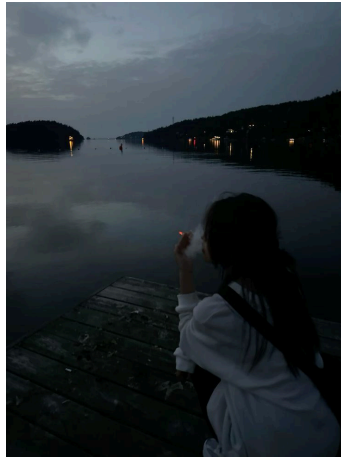
1:43-2:06

B-Roll, low shutter speed



2:07-2:31

Solo scenes



Schedule:

2:00-3:00pm: Indoor shots, Apt

3:00-4:00pm: Outdoor B-Roll + Slow mo shot (Downtown Ann Arbor)

4:00-5:00pm: Dock/water sunset scenes

5:00-6:00pm: Night shots outdoor, Find isolated lighting + Indoor